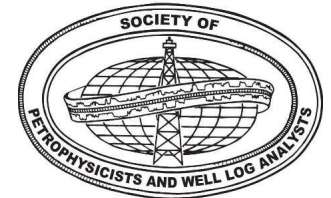


FORMATION EVALUATION SOCIETY OF AUSTRALIA



NEW TECHNOLOGY FORUM 2017

'Software Solutions for Formation Evaluation'

\$20 (Early Bird Registration by Friday September 1st)

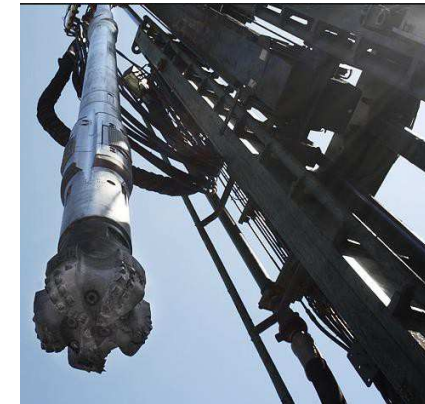
\$30 (Registration after Friday September 1st)

Cost including GST, Lunch and Afternoon Tea
 Details and registration online via www.fesaus.org

Thursday, 07 September 2017 12:00pm-5:30pm

Woodside Auditorium, Woodside Plaza 240 St Georges Terrace,
 Perth, WA

AGENDA		
12:00	Registration and Networking Lunch	
12:45	Introduction and Welcome	FESAus Chairman
01:00	Geological Process Modeling (GPM) – Forward geologic modeling fully integrated with reservoir modelling	Schlumberger
01:30	Inversion of Formation Resistivity in High Angle Wells	Baker Hughes
02:00	Petrophysics in the Context of an End-to-End Geoscience Workflow	Halliburton
02:30	Harnessing the full potential of image data – amazing revelations	Weatherford
03:00	Coffee Break	
03:15	A Modern, Intuitive Petrophysical Workflow with IP: Interactive Petrophysics and IC: Instant Clarity	Lloyd's Register (Senergy)
03:45	High Resolution Facies Prediction by Integrating Dip Quality Index and Automatic Texture Analysis from Borehole Images in Geolog	Paradigm
04:15	Benefits of Wireline Thru-bit imaging technology and the latest processing and interpretation methodologies	Schlumberger
04:45	Rotary Coring Methodology	Baker Hughes



Venue sponsor:

